

Dossier CMP Arles : 783

Page/Sheet 1/9

Client / Customer : AIR LIQUIDE AGS GmbH

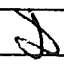
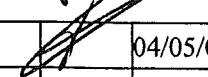
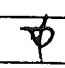
Engineered System N° :

1 RESERVOIR DE STOCKAGE LOX 1800MT

1 X 1800MT LOX STORAGE TANK

ITEM D 62001

TUBULURES F2-L4 (DN150/DN80)
LIQUID OUTLET NOZZLE F2
ACTUATOR NOZZLE L4

4		04/05/05	DUPRESSOIR		04/05/05	HULIN		04/05/05	LEBOUCQ		
1		09/12/04	NANTIER		09/12/04	HULIN		09/12/04	LEBOUCQ		
EDITION EDITION N°	REFERENCE CLIENT REF.	DATE	NOM NAME	SIGN.	DATE	NOM NAME	SIGN.	DATE	NOM NAME	SIGN.	ETAT D'AVANC. STATUS
REDACTEUR DRAWN UP BY				VERIFICATEUR CHECKED BY			APPROBATEUR APPROVED BY				

Projet : **ASU No.9 KOSICE**
ProjectClassement CMP Arles : **783-17.F2/L4**
CMP Arles document N°

Ce document est la propriété de CMP Arles. Il ne pourra sans autorisation écrite être utilisé ou communiqué à des tiers, toutes précautions utiles seront prises pour éviter sa divulgation.

This document is the property of the CMP Arles. It may not be used or transmitted to third parties without the written consent of the company. All necessary precautions shall be taken to avoid disclosure.

revision number

*This document is the property of the CMP Arles. It may not be used or transmitted to third parties without the written consent of the company.
All necessary precautions shall be taken to avoid disclosure.*

Dossier CMP Arles : 783

Client / Customer : AIR LIQUIDE AGS GmbH

Engineered System N° :

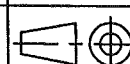
Plan N° : 783-17.F2/L4

NOZZLE F2

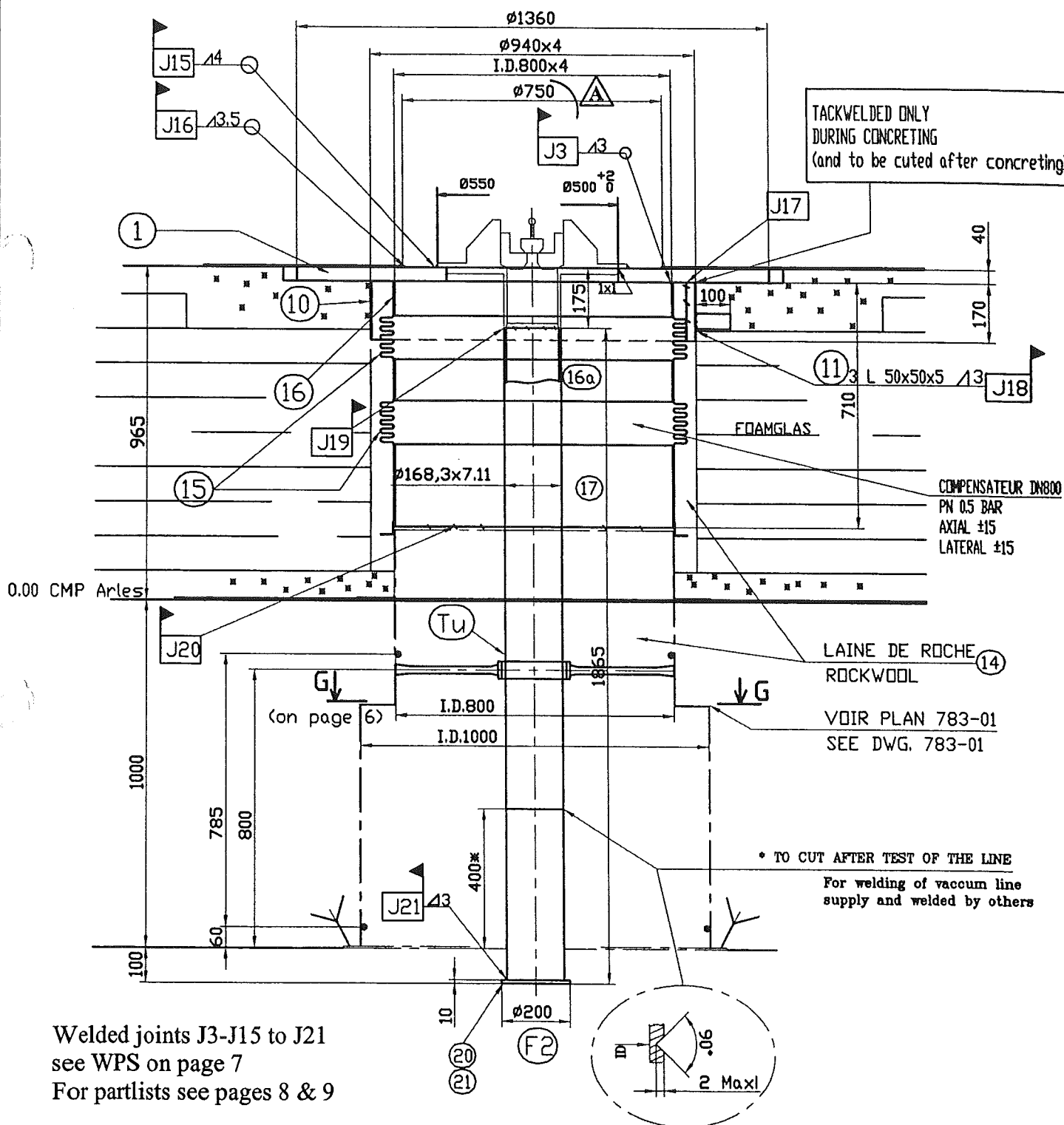
ELEVATION VIEW

Page/Sheet 3/9

Rev A



Echelle/Scale
/



Dossier CMP Arles : 783

Page/Sheet 4/9

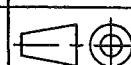
Client / Customer : AIR LIQUIDE AGS GmbH

Engineered System N° :

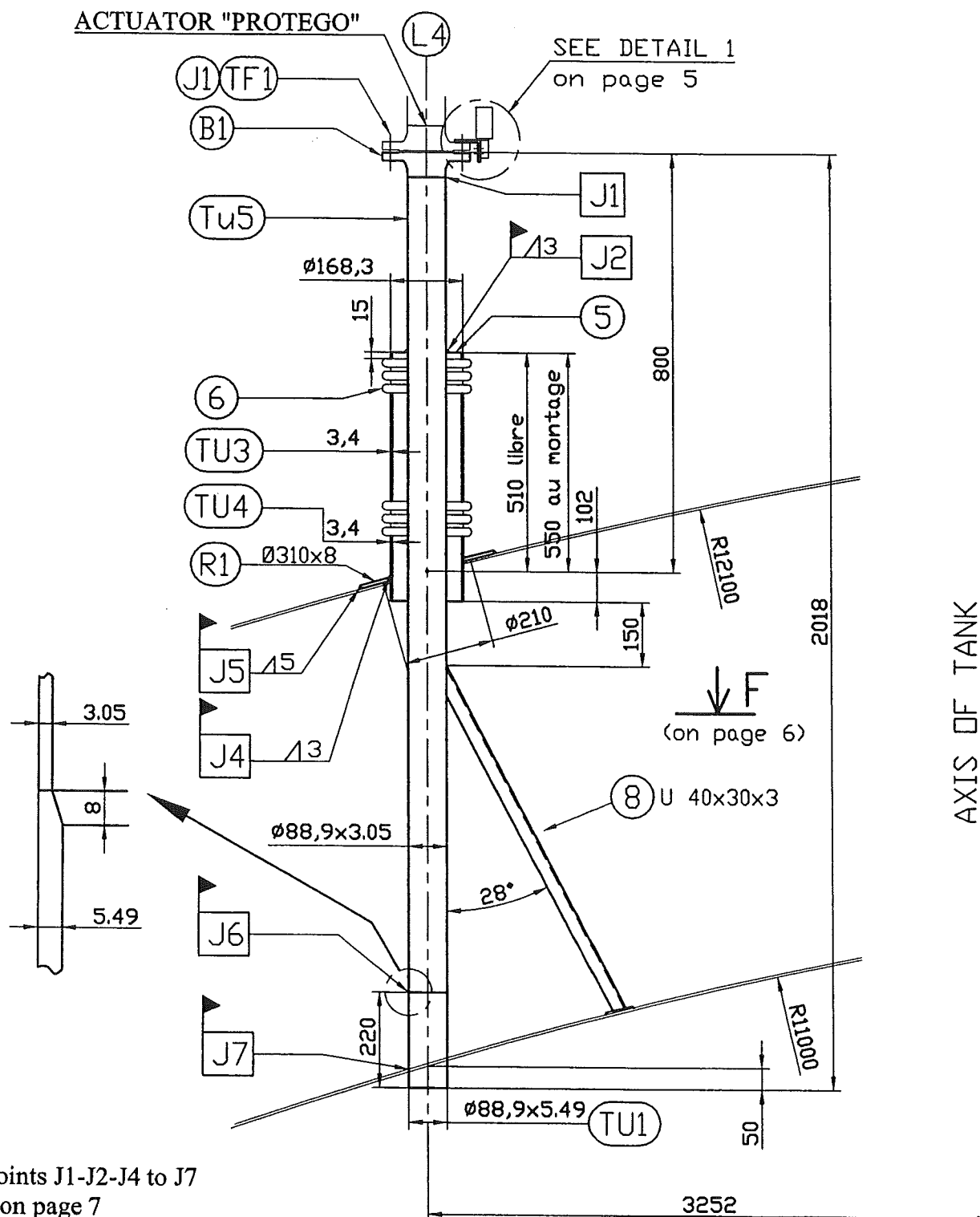
Rev A

Plan N° : 783-17.F2/L4**NOZZLE L4**

ELEVATION VIEW



Echelle/Scale



Welded joints J1-J2-J4 to J7
see WPS on page 7
For partlists see pages 8 & 9

Ce document est la propriété de CMP Arles. Il ne pourra sans autorisation écrite être utilisé ou communiqué à des tiers, toutes précautions utiles seront prises pour éviter sa divulgation.

This document is the property of the CMP Arles. It may not be used or transmitted to third parties without the written consent of the company.
All necessary precautions shall be taken to avoid disclosure.

Dossier CMP Arles : 783

Page/Sheet 5/9

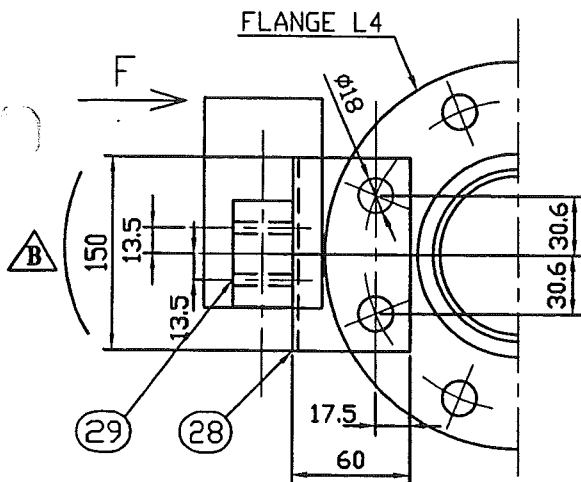
Client / Customer : AIR LIQUIDE AGS GmbH

Engineered System N° :

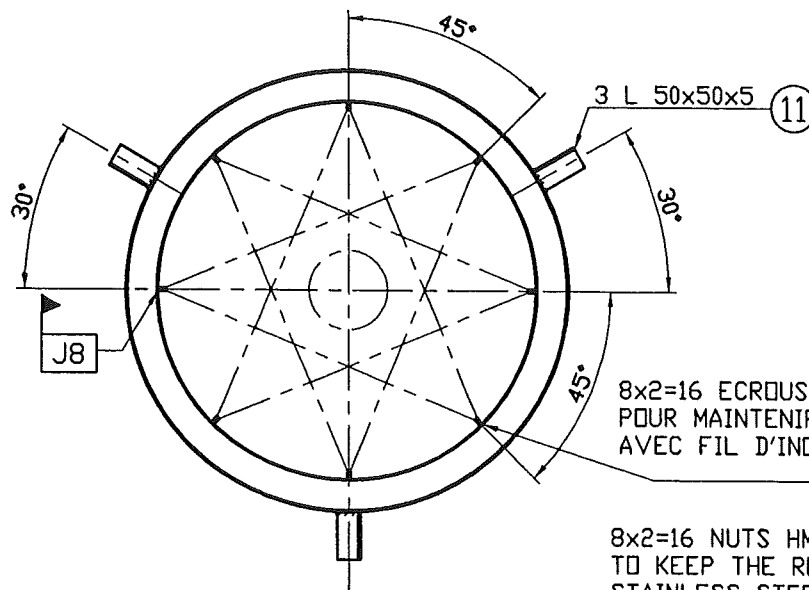
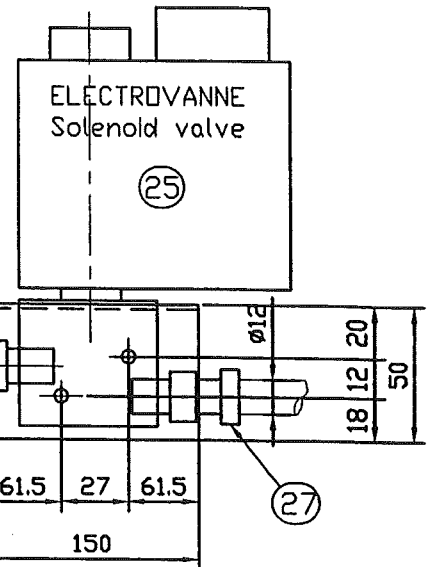
Rev B

Plan N° : 783-17.F2/L4**SUPPORTS FOR INSULATION + DETAIL 1**

ORIENTATION VIEW

Echelle/Scale
/**DETAIL 1****F VIEW**TOP VIEW
Support for solenoid valveTO CONNECTED ON +
OF ACTUATOR

ACTUATOR

8x2=16 EROUS HM10 POINTES
POUR MAINTENIR LA LAINE DE ROCHE
AVEC FIL D'INOX. (12) (13)8x2=16 NUTS HM10 TACK WELDED
TO KEEP THE ROCKWOOL WITH
STAINLESS STEEL WIRE.

Welded joint J8

see WPS on page 7

For partlists see pages 8 & 9

ORIENTATION ITEM 11 & 12.

Ce document est la propriété de CMP Arles. Il ne pourra sans autorisation écrite être utilisé ou communiqué à des tiers, toutes précautions utiles seront prises pour éviter sa divulgation.

This document is the property of the CMP Arles. It may not be used or transmitted to third parties without the written consent of the company.
All necessary precautions shall be taken to avoid disclosure.

Dossier CMP Arles : 783

Page/Sheet 6/9

Client / Customer : AIR LIQUIDE AGS GmbH

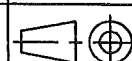
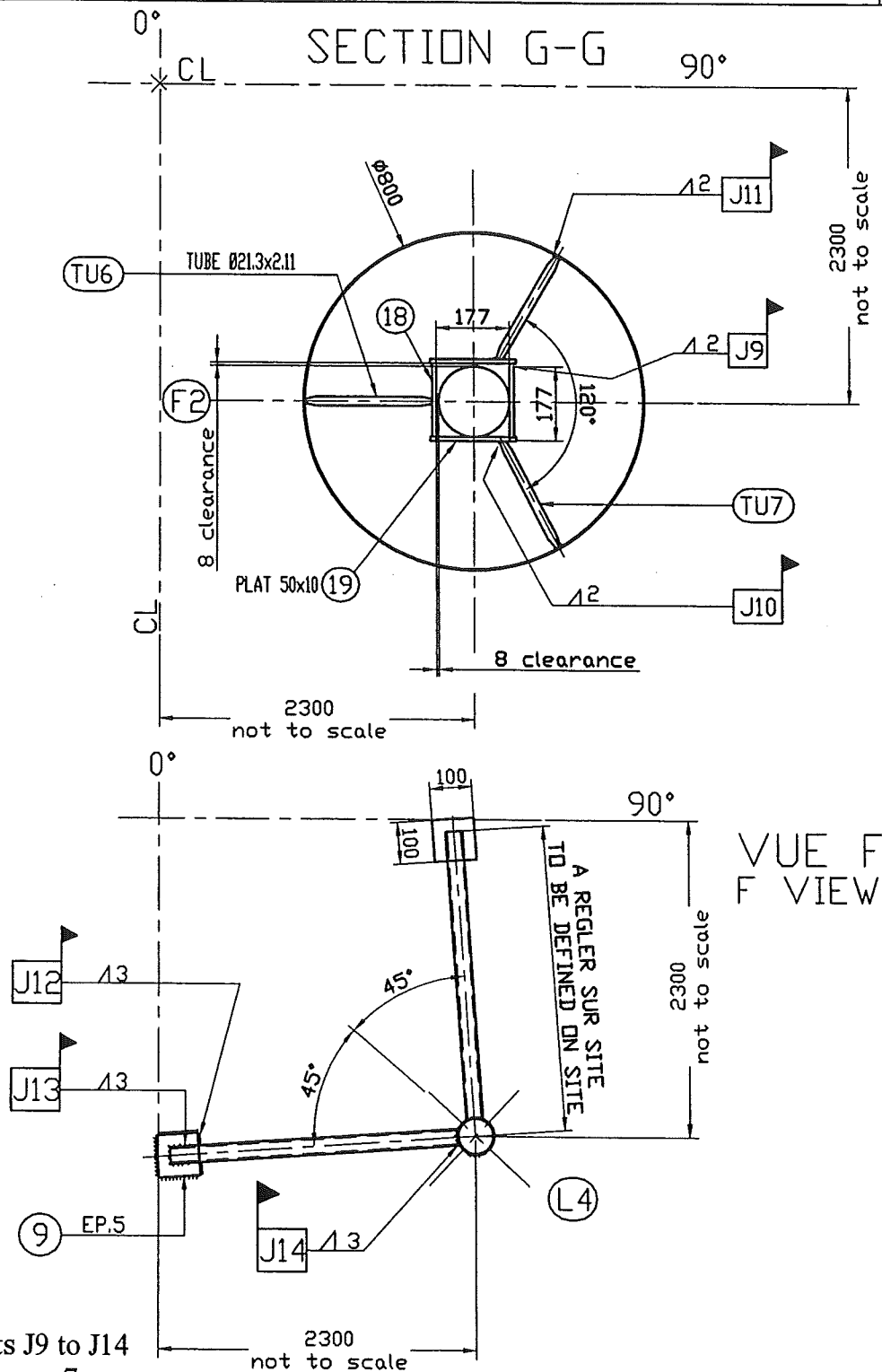
Engineered System N° :

Rev 0

Plan N° : 783-17.F2/L4

SECTION G-G & F VIEW

DETAILS

 Echelle/Scale /Welded joints J9 to J14
see WPS on page 7

For partlists see pages 8 & 9

Ce document est la propriété de CMP Arles. Il ne pourra sans autorisation écrite être utilisé ou communiqué à des tiers, toutes précautions utiles seront prises pour éviter sa divulgation.

This document is the property of the CMP Arles. It may not be used or transmitted to third parties without the written consent of the company.
All necessary precautions shall be taken to avoid disclosure.


Dossier CMP Arles : 783

Page/Sheet 7/9
Rev 0

Client / Customer : AIR LIQUIDE AGS GmbH *Engineered System N° :*

Plan N° : 783-17.F2/L4

WPS TABLE

	Echelle/Scale /
---	--------------------

1) TYPICAL FILLET WELD



2) = SITE WELDING

[illegible]

(4) see list on CRYO-CS1

Ce document est la propriété de CMP Arles. Il ne pourra sans autorisation écrite être utilisé ou communiqué à des tiers, toutes précautions utiles seront prises pour éviter sa divulgation.

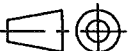
*This document is the property of the CMP Arles. It may not be used or transmitted to third parties without the written consent of the company.
All necessary precautions shall be taken to avoid disclosure.*

Dossier CMP Arles : 783

Page/Sheet 8/9

Client / Customer : AIR LIQUIDE AGS GmbH Engineered System N° :

Rev 0

Plan N° : 783-17.F2/L4**NOMENCLATURE/LISTE DE COLISAGE** Echelle/Scale
/

PART LIST/PACKING LIST

		TUBULURE (nozzle) F2					
S/E.1	1	SUB-ASSEMBLY INCLUDING ITEMS:				53	
15	2	COMPENSATEUR (compensator) PN 0.5bar axial/lateral ±15	A240 321	/			
16	1	VIROLE (shell) O.D.=808 thk.4	A240 304/304L	/			
16a	1	VIROLE (shell) O.D.=808 thk.4	A240 304/304L	/			
17	1	VIROLE (shell) O.D.=808 thk.4	A240 304/304L	/			
		TUBULURE (nozzle) L4					
S/E.2	1	SUB-ASSEMBLY INCLUDING ITEMS:				20	
TU5	1	TUBE Ø88.9x3.05 (pipe 3" sch 10S) RS Lg:2200 (1)	A312 TP304L	3.1b			
B1	1	BRIDE (flange) DIN 2635 form C DN80	A182 F304L	3.1b			
S/E.3	1	SUB-ASSEMBLY INCLUDING ITEMS:				12	
6	2	COMPENSATEUR (compensator) DN 150 PN 0.5bar Axial ±50 Lateral ±15	A240 321	/			
5	1	TOLE (plate) thk.15	A240 304/304L	/			
TU3	1	TUBE (pipe) RS 6" sch 10S	A312 TP304L	/			
TU4	1	TUBE (pipe) RS 6" sch 10S	A312 TP304L	/			
		(1) including overlength of 200 mini	* or equivalent				
REF	QTY	DESIGNATION	REV	NORME/NUANCE	EN10204	POIDS NET Kg	CERTIF
ITEM	QTY	DESIGNATION	REV	NORM/MATERIAL	CERTIF	NET WEIGHT	VISA/EXT
SUPPLY BY CMP Arles							

Ce document est la propriété de CMP Arles. Il ne pourra sans autorisation écrite être utilisé ou communiqué à des tiers, toutes précautions utiles seront prises pour éviter sa divulgation.

This document is the property of the CMP Arles. It may not be used or transmitted to third parties without the written consent of the company.
All necessary precautions shall be taken to avoid disclosure.

Dossier CMP Arles : 783

Page/Sheet 9/9

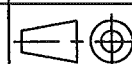
Client / Customer : AIR LIQUIDE AGS GmbH

Engineered System N° :

Rev A

Plan N° : 783-17.F2/L4**NOMENCLATURE/LISTE DE COLISAGE**

PART LIST/PACKING LIST



Echelle/Scale

/

PIECES LIVREES NON ASSEMBLEES ITEMS DELIVERED IN SEPARATES PARTS						
1	1	COURONNE (plate) Ø1360xØ500x40		A240 304	3.1b	402
8	2	U40x30x3 (plate)		A240 304/304L	/	0.1
9	2	TOLE (plate) 100x100x5		A240 304/304L	3.1b	1
10	1	VIROLE (shell) O.D.940x4 lg 170		A240 304/304L	/	16
11	3	CORNIERE (angle) 50x50x5 lg:100		304/304L		1.2
12	16	ECROU (nut) HM10		ISO3506-2 A4	/	0.2
13	10m	FIL (wire) Ø1.2		S.S.	/	0.4
14	3	ROULEAU DE LAINE DE ROCHE (rockwool roof)		ROCKWOOL	/	10
18	2	PLAT (tole) 177x50x12		A240 304/304L	/	1.7
19	2	PLAT (tole) 218x50x12		A240 304/304L	/	2.1
J1	1	JOINT PLAT Ø200xØ89x3 percé de 8 trous Ø18 sur Ø160 (gasket Ø200xØ89x3 drilled 8 holes Ø18 on Ø160)	A	KLINGERSIL C4430	/	0.2
R1	1	COURONNE (plate) O.D.310 thk.8		A240 304/304L	/	3.5
TF1	8+1	TIGE FILETEE M16x100 AVEC 2 ECROUS HM16 (threaded stud HM16x100 with 2 nuts HM16)	A	A193 B8M CI 1 A194 8M	/	3.5
TU	1	TUBE Ø168.3x7.11 (pipe 6" sch 40S) SS lg:2065 (1)		A312 TP304L	3.1b	60
TU6	1	TUBE (pipe) RS 1/2" sch 10S		A312 TP304L	/	0.3
TU7	2	TUBE (pipe) RS 1/2" sch 10S		A312 TP304L	/	0.6
TU1	1	TUBE (pipe) SS 3" sch 40S lg. 220		A312 TP304L	3.1b	2.5
20	1	TOLE EP.10 (plate thk 10) Ø200		A240 304L	/	2.5
21	1	Bouchon à tête hexagonal (hexagon head plug) 3000# 1/4" NPT		304/316L*	/	0.2
25	1	ELECTROVANNE 3/2 DN5 HERION (solenoid valve) 24V DC	A	BRASS	/	1
26	1	RACCORD (fitting) Ø6 1/4" male NPT	A	304/316L*	/	/
27	1	RACCORD (fitting) Ø12 1/4" male NPT	A	304/316L*	/	/
28	1	SUPPORT Thk.3	A	A240 304/304L	/	/
29	2	Boulon (bolt) HM5x40	A	S.S.	/	/
(1) including overlength of 200 mini				* or equivalent		
REF	Qté	DESIGNATION	REV	NORME/NUANCE	ENI/204	POIDS NET kg
ITEM	Qty	DESIGNATION	rev	NORM/MATERIAL	CERTIF	NET WEIGHT
SUPPLY BY CMP Arles						

Ce document est la propriété de CMP Arles. Il ne pourra sans autorisation écrite être utilisé ou communiqué à des tiers, toutes précautions utiles seront prises pour éviter sa divulgation.

This document is the property of the CMP Arles. It may not be used or transmitted to third parties without the written consent of the company.
All necessary precautions shall be taken to avoid disclosure.